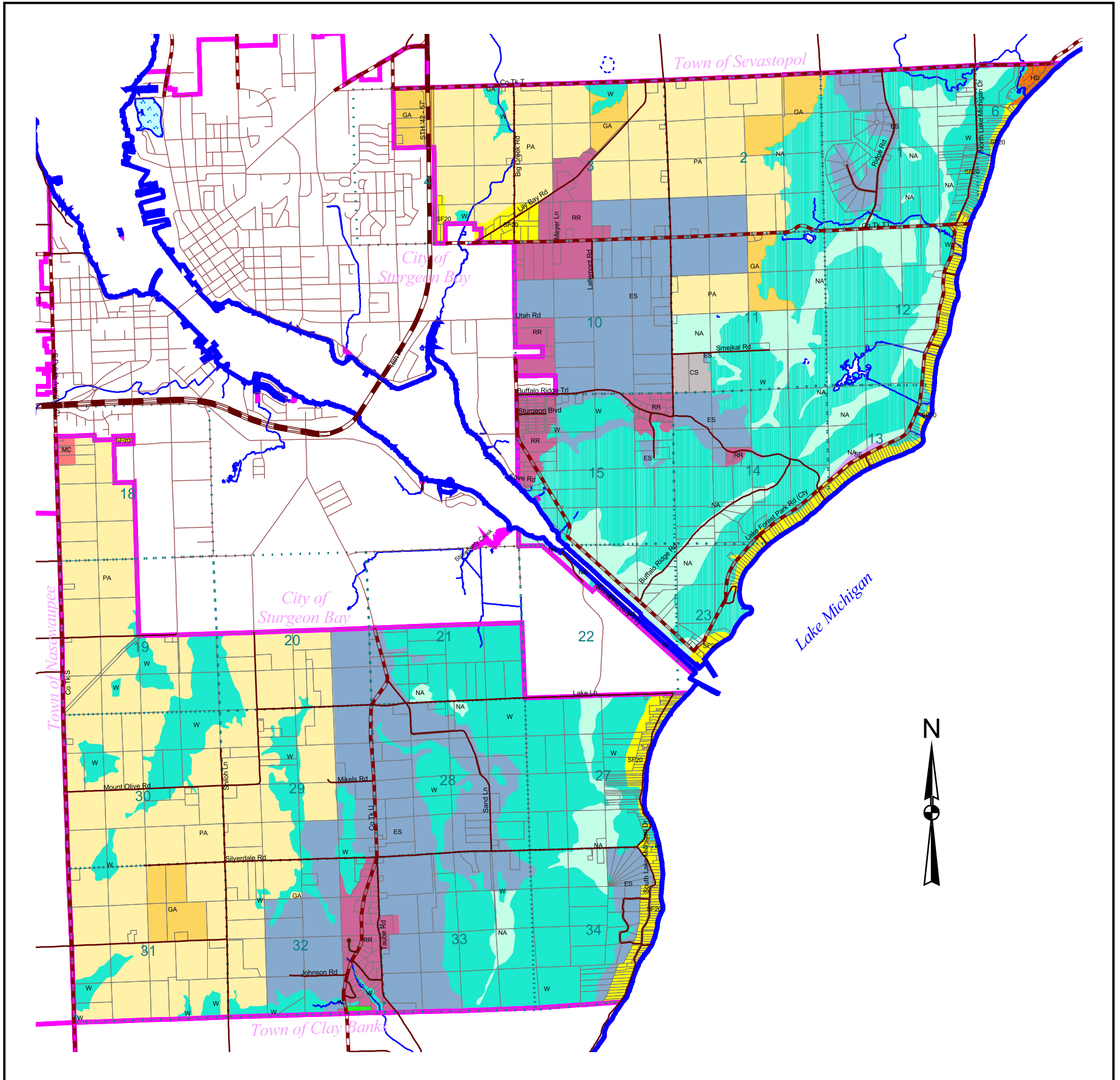


Town of Sturgeon Bay

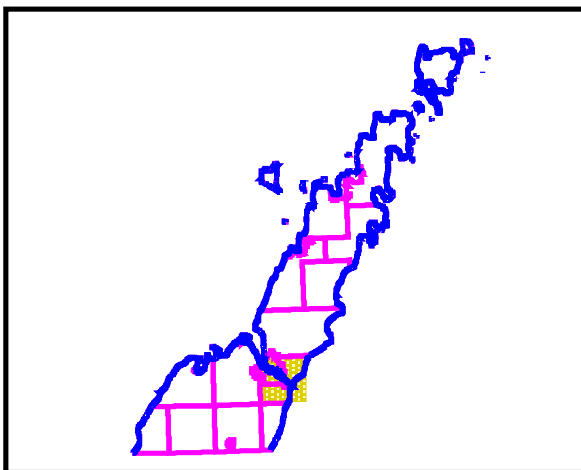
one of a set of

ZONING MAPS OF DOOR COUNTY

December, 2009



Overview of Door County



County Zoning				
CC	Commercial Center	HL10	Heartland - 10	Section lines
MC	Mixed Use Commercial	HL5	Heartland - 5	Navigable Stream
RC	Recreational Commercial	HL3.5	Heartland - 3.5	Ponds
LI	Light Industrial	SE	Small Estate Residential	Lakes
EA	Exclusive Agricultural	RR	Rural Residential	Tax Parcels
PA	Prime Agricultural	SF30	Single Family - 30,000	Municipal Boundary
GA	General Agricultural	SF20	Single Family - 20,000	
CS	Countryside	HD	High Density Residential	
ES	Estate	NA	Natural Area	
		W	Wetland	

NOTE: This map was intended to comply with Door County Ordinance number 2-95. Changes may have occurred since this map was produced. Please verify any and all information on this map by contacting; Door County Planning Dept., 421 Nebraska St., Sturgeon Bay, WI. Phone (920) 746-2323

Map Produced by: Mark Kordus, D.C.P.D.